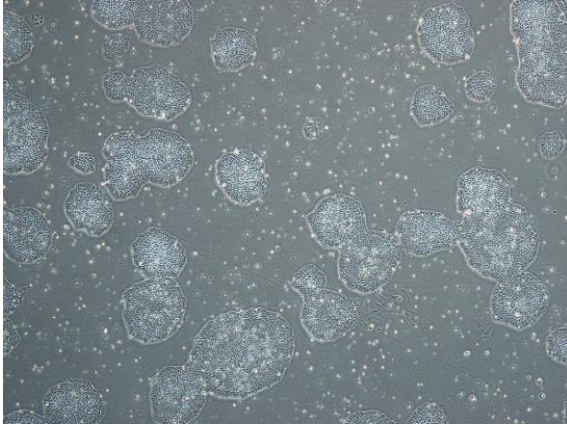
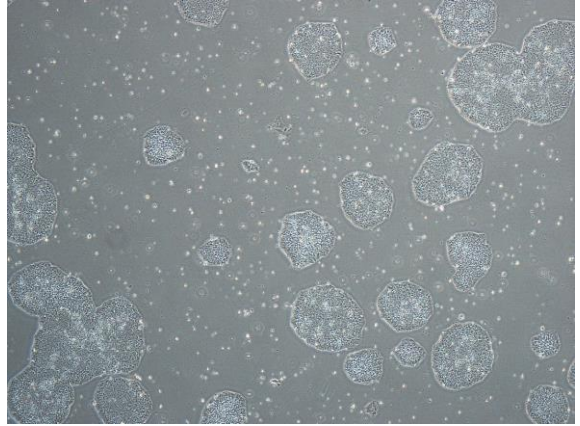


## 【 CiRA-j-1048 】 Morphology of iPSC colonies

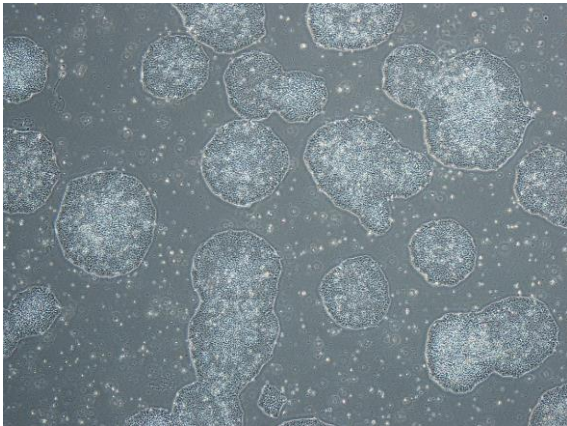
CiRA-j-1048-A: passage-2



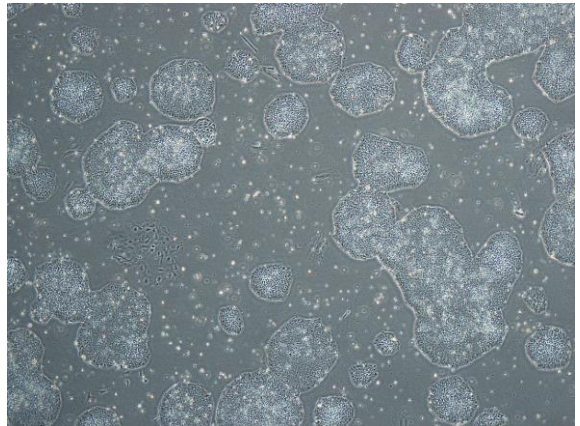
CiRA-j-1048-B: passage-2



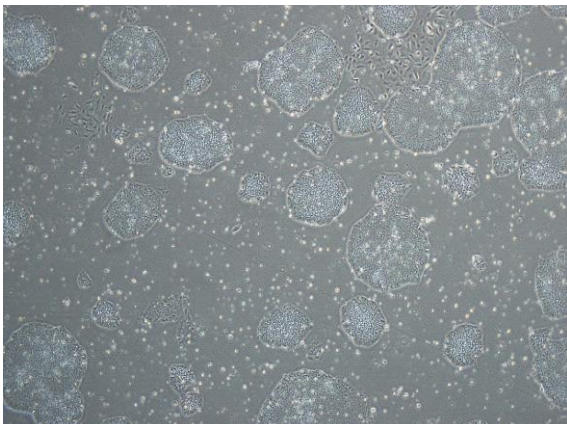
CiRA-j-1048-C: passage-2



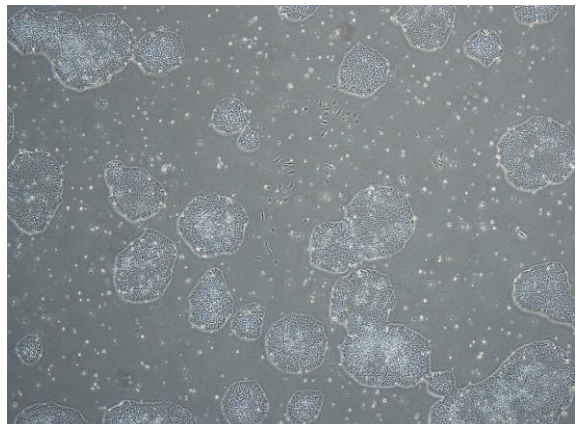
CiRA-j-1048-D: passage-2



CiRA-j-1048-E: passage-2



CiRA-j-1048-F: passage-2



( All images were captured at 4x magnification )